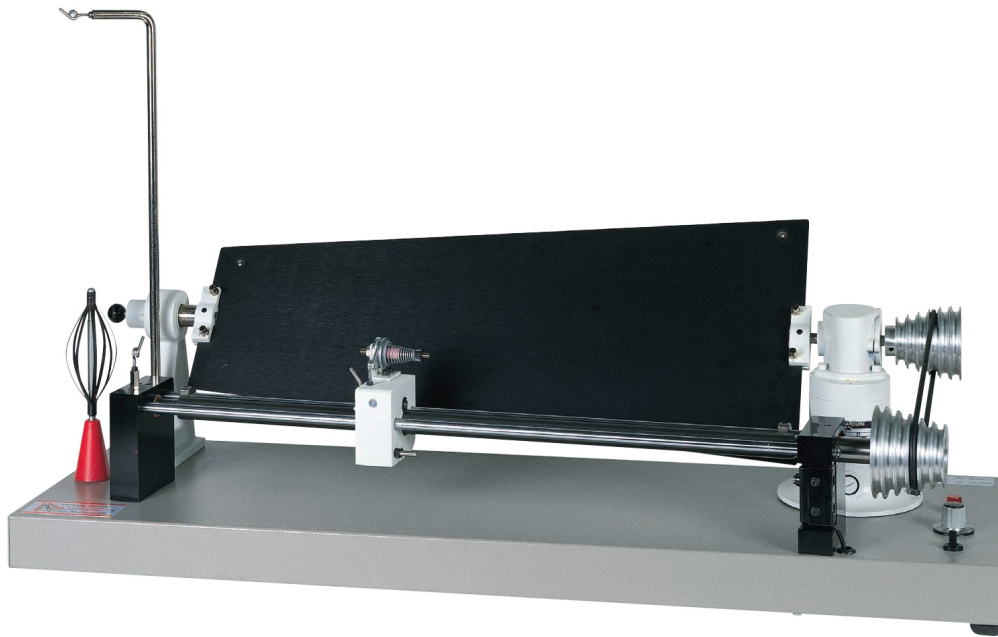


# ELECTRONIC CONICAL TABLE

**LH-701**



Visual method of inspecting the yarn uniformity requires wrapping the yarn on a board and comparing it to a standard sample. In addition to yarn regularity, periodic defects such as moiré effect can also be determined when the yarn is wrapped on a taper board.

Lawson-Hemphill Conical Table uses Transverse Mechanism to wrap the yarn around a Taper Board. This mechanism ensures yarn wraps are equally spaced on the board as per yarn count. ASTM D 2255 provides a reference table for proper spacing. The standard version of the Taper Board instrument is equipped with one Yarn Carrier. Dual Yarn Carriers for comparing two yarns side by side and Double Step version to double space between each wrap are also available as special versions for heavier yarns or fancy yarns.

When the test starts, the Yarn Carrier is placed at the narrowest part of the taper board. As the wrapping continues, the yarn carrier will continue to bring the yarn towards the wider parts of taper board. The winding will stop automatically when the carrier reaches the widest part of the board. The taper board can then be removed to inspect the yarn. During the winding, the yarn is under tension. The winding speed is manually adjustable and the machine can be stopped at any time.

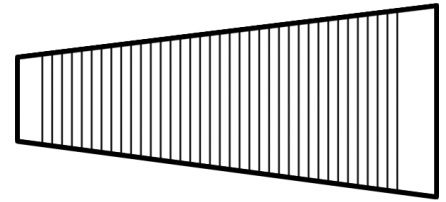
## FEATURES

- Motorized machine to wind yarn uniformly on taper board at constant speed
- Equipped with twin stepped pulleys to apply different number of yarn wraps/inch as per yarn count
- Uses same belt to drive the pulleys at different wrap density settings
- Smooth and precise movement of the yarn carrier at varying winding speeds
- Auto Stop when winding is completed
- Separate yarn stand for yarn bobbin or cops

## MODELS

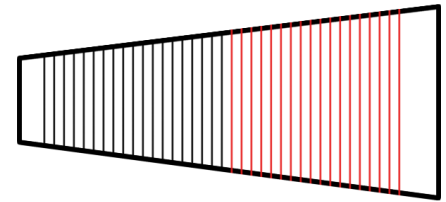
### LH 701 Standard Taper Board

This is the standard model with one yarn carrier and adjustable pulleys to apply 20-48 wraps/inch.



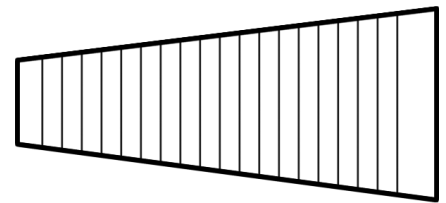
### Taper Board with Double Carriers

This dual Yarn Carrier model allows two yarns to be compared side by side on the same board. Each yarn will cover half of the board.



### Taper Board with Double Step

Double Traverse Speed allows heavier yarns and fancy yarns to be wrapped on the board at double spacing between each wrap.



## ACCESSORIES and SPARE PARTS

- Black Taper Boards
- White Taper Boards

## TECHNICAL SPECIFICATIONS

Winding Speed	0-100rpm
Power Supply	110V or 220V
Board Size	Trapezoidal 15.5 x 25.5 x 60cm (6.1 x 10.0 x 23.6 inches)
Dimensions	90 x 30x 23cm (35.4 x 11.8 x 9 inches)
Weight	19 kg (42 lbs)

*\*All specifications are subject to change.*

Contact us today for more information on any Lawson-Hemphill product!

**Lawson Hemphill Inc.**  
 1658 G.A.R. Highway, Unit 6  
 Swansea, MA 02777 USA  
 Phone: +1 508 679 5364  
 information@lawsonhemphill.com  
 www.lawsonhemphill.com

