

### Robust and easy-to-use

The Crush Test is designed as a robust, easy to-use instrument. Exactly what you need when performing crush tests. The Crush Tester is suitable for a wide variety of samples, including corrugated board, tubes, paper and plastics. The special sample holders extend the instrument's possibilities. The accuracy is achieved with a precision load cell, which is even accurate at low force values.

### Test Results

After each test the results are displayed on screen. Along with the results, a test curve and statistics are also shown. The software allows the operator to develop individual test methods for easy operation. Changing measuring units is easy and allows the crush tester to conform to a variety of testing standards. The data is easily exported to a computer, especially when using the GraphMaster™ software.

### Features

- Solid and robust instrument
- Ergonomic design
- Precision load cell
- Load cell up to 5000 Newton
- Special sample holders available
- Easy to use interface
- Suitable for: RCT, CMT, CCT, PAT, ECT, FCT, SQT test

### International Standards

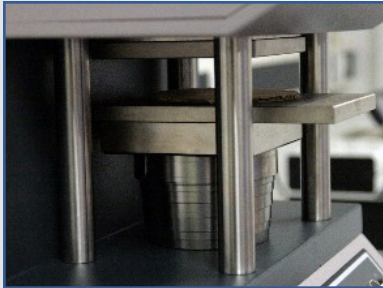
- DIN 53134, 53149
- PPITA/AS 1301.429s
- FEFCO No. 11, No. 8, No. 6
- SCAN P34, P27, P33. P32, P42
- ISO 12192, 7263, 3037, 13821, 3035
- APPITA/AS 1301.407s, 1301.434s, 1301.430s, 1301.444s
- TAPPI T822, T809, T843, T821, T811, T823, T838, T839, T825, T829

# Crush Tester

## Model 17-56



### Robust design



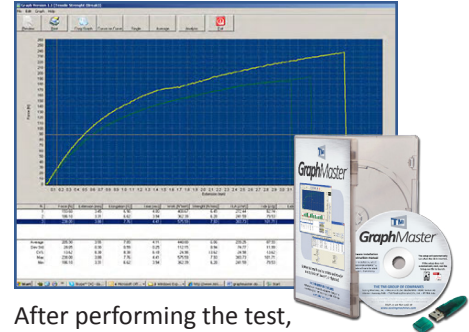
A robust test frame, precision load cell and new electronic design ensure repeatable test results, unmatched accuracy and reliable, trouble-free operation.

### Easy-to-use interface



The touch screen interface makes it easy to switch between tests. Six favorite methods can be selected for placement on the main screen, improving the speed of testing.

### GraphMaster™ software

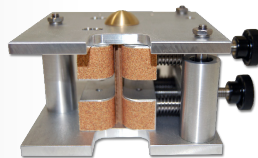


After performing the test, the operator can save all curve and test result data directly to an external PC. GraphMaster™ makes this work easy!

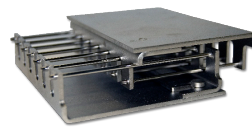
### Sample holders



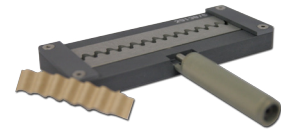
**RCT: Ring Crush Test**  
17-11-13



**ECT: Edge Crush Test**  
17-11-49



**PAT: Ply Adhesion Test**  
17-11-09



**CCT: Corrugated Crush Test**  
17-11-22

### Specifications

Model	17-56 Series
Measuring units	N, lb, N/m, lb/in, kPa, lb/ft, lb/in <sup>2</sup> , kN/m
Measuring range	0,000 – 5,000 N (1,125 lb)
Stroke length	4 – 78mm (0.158 -3.07 in)
Test speed	5-50 mm/min (0.2 – 2.00 in/min)
Return speed	± 100 mm/min (4.00 in/min)
Upper platen	125 x 125mm (4.92 x 4.92 in)
Lower platen	180 x 125mm (7.08 x 4.92 in)
Accuracy	1% of reading
Overload protection	Adjustable, max 5000N
Language	7 different

### Installation requirements

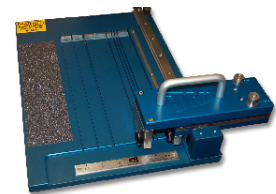
Electrical	100 – 230 VAC, 50/60 Hz
Dimensions	370 x 400 x 710 mm (WxDxH) (14.5 x 15.7 x 28 in)
Weight	69 kg (152 lbs)

### Output

Serial mini USB  
GraphMaster™ / result string

### Optional accessories

GraphMaster™ software  
Sample holders  
Cutters



**Corrugated Sample Cutter**  
22-76

